

MONTHLY MEMBERSHIP PROGRESS REPORT

District 9 MC

Results as of: 4/30/2026

GMT:

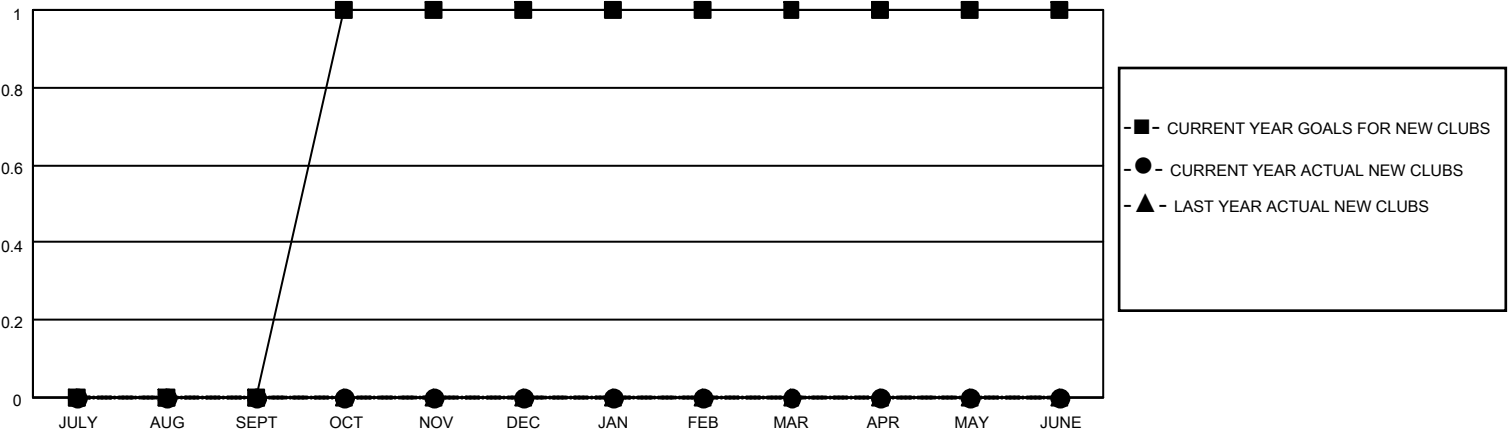
LOCATION IOWA

GMT CA

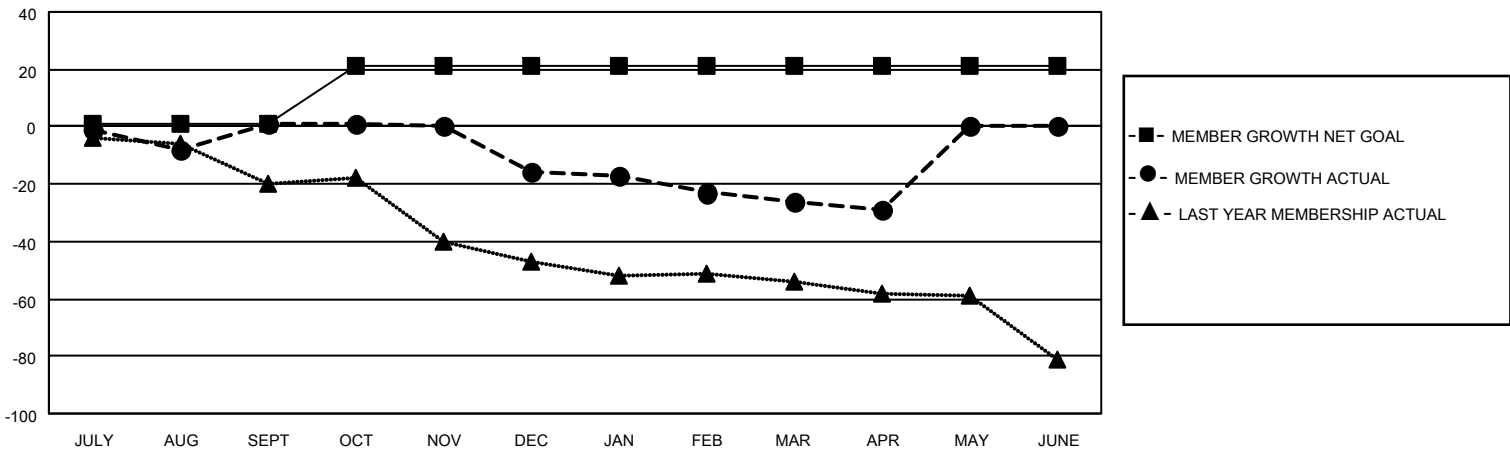
| Clubs | | | |
|-----------------------|---------------|-----------|---------------|
| RESULTS FOR 2025-2026 | | | |
| QUARTER | NEW CLUB GOAL | NEW CLUBS | DROPPED CLUBS |
| JULY/AUG/SEPT | 0 | 0 | 0 |
| OCT/NOV/DEC | 1 | 0 | 0 |
| JAN/FEB/MAR | 0 | 0 | 0 |
| APR/MAY/JUNE | 0 | 0 | 0 |

| Members | | | |
|-----------------------|------------------------|----------------------|----------------------------------------------|
| RESULTS FOR 2025-2026 | | | |
| QUARTER | MEMBER GROWTH NET GOAL | MEMBER GROWTH ACTUAL | DROPPED MEMBERS ACTUAL (including transfers) |
| JULY/AUG/SEPT | 1 | 15 | 13 |
| OCT/NOV/DEC | 20 | 7 | 23 |
| JAN/FEB/MAR | 0 | 16 | 26 |
| APR/MAY/JUNE | 0 | 3 | 5 |

GOALS AND ACTUAL NEW CLUBS CUMULATIVE



GOALS AND ACTUAL MEMBERS CUMULATIVE



| | | |
|-----------------------------------------------------------------------------------|-----------------------------------------------------------|------------------------------------------------------------------------|
| DROPPED CLUBS: 0 | 16 CLUBS OF 37 ADDED 1 OR MORE NEW MEMBERS | GENDER DISTRIBUTION MALE 546 (73.09%) FEMALE 198 (26.51%) |
| DROPPED MEMBERS DECEASED 11 CLUB CANCELLED 0 OTHER 56 TOTAL 67 | CLICK HERE FOR CUMULATIVE MEMBERSHIP DATA | TOTAL FAMILY UNIT MEMBERS 163 FAMILY MEMBERS PAYING HALF DUES 83 |